

Connections to THINKING

Read the spelling words and sentences.

hwa + n spelled en, on, ion

1. _____
2. _____
3. _____
4. _____
5. _____
6. _____
7. _____
8. _____
9. _____
0. _____
1. _____
2. _____

hwa + r spelled er, or

3. _____
4. _____
5. _____
6. _____
7. _____
8. _____
9. _____
0. _____

- | | | |
|---------------|-------------------|---|
| 1. citizen | <i>citizen</i> | Jules is a citizen of Belgium. |
| 2. profession | <i>profession</i> | Nursing is a rewarding profession . |
| 3. companion | <i>companion</i> | A good companion can make you laugh. |
| 4. governor | <i>governor</i> | The governor called a statewide meeting. |
| 5. solution | <i>solution</i> | Is there a solution to the problem? |
| 6. mention | <i>mention</i> | Did Claire mention my party? |
| 7. common | <i>common</i> | The common room is shared by all. |
| 8. senator | <i>senator</i> | The term of a senator is six years. |
| 9. mission | <i>mission</i> | Our mission is to send aid to them. |
| 10. section | <i>section</i> | The first section of the book is exciting. |
| 11. million | <i>million</i> | Several million stars filled the sky. |
| 12. oven | <i>oven</i> | Preheat the oven before baking. |
| 13. differ | <i>differ</i> | My parents differ on some issues. |
| 14. bother | <i>bother</i> | These flies bother my dog. |
| 15. mayor | <i>mayor</i> | Our town elected the same mayor again. |
| 16. copper | <i>copper</i> | Electricity flows through copper . |
| 17. dozen | <i>dozen</i> | A dozen eggs are needed for the cake. |
| 18. motor | <i>motor</i> | The motor in the clock is broken. |
| 19. onion | <i>onion</i> | Raw onion brings tears to my eyes. |
| 20. remember | <i>remember</i> | May Ling can remember the 1950s. |

Think & Sort the spelling words.

1–12. Write the words that end in **schwa + n** spelled **en, on,** or **ion**.

13–20. Write the words that end in **schwa + r** spelled **er** or **or**.

Remember

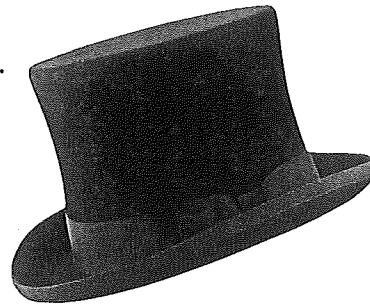
The **schwa + n** sound can be spelled **en** as in **oven**, **on** as in **common**, or **ion** as in **companion**. The **schwa + r** sound can be spelled **er** as in **copper** or **or** as in **motor**.

Connections to VOCABULARY

Complete the Rhymes

Write the spelling word that completes each rhyme. The rhyming words are underlined.

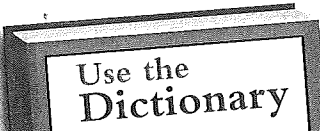
- Her cake had a top hat on the last layer. She had just been elected ____.
- If Jane had only one more cousin, she would have an even ____.
- I am lucky to have a very good father. To him, I am never, ever a ____.
- Do you know that a billion is many times more than a ____?



Use Synonyms

Write the spelling word that is a synonym for each word. Circle the letters that make the **schwa-n** or **schwa-r** sound.

- | | |
|---------------|--------------|
| 5. engine | 8. friend |
| 6. occupation | 9. portion |
| 7. answer | 10. ordinary |



Write the spelling word for each dictionary respelling. Next to each word write **n** if the word is a noun or **v** if the word is a verb. Look up the respellings in your **Spelling Dictionary** to check your answers.

- | | |
|-------------------|-------------------|
| 11. /rĭ mĕm' bĕr/ | 16. /kŏp' ər/ |
| 12. /sĭt' ĭ zən/ | 17. /mĕn' shən/ |
| 13. /ŭv' ən/ | 18. /dĭf' ər/ |
| 14. /ŭn' yən/ | 19. /sĕn' ə tər/ |
| 15. /mĭsh' ən/ | 20. /gŭv' ər nər/ |

Complete the Rhymes

1.

2.

3.

4.

Use Synonyms

5.

6.

7.

8.

9.

10.

Use the Dictionary

11.

12.

13.

14.

15.

16.

17.

18.

19.

20.

Connections to READING

citizen	profession	companion	governor	solution
mention	common	senator	mission	section
million	oven	differ	bother	mayor
copper	dozen	motor	onion	remember

Complete the Analogies

1. _____
2. _____
3. _____
4. _____
5. _____

Make Inferences

6. _____
7. _____
8. _____
9. _____
10. _____
11. _____

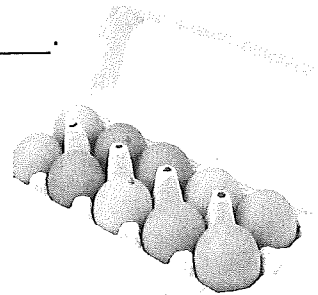
Use Context Clues

1. _____
2. _____
3. _____
4. _____
5. _____
6. _____
7. _____
8. _____
9. _____
10. _____

Complete the Analogies

Write a spelling word to complete each analogy.

1. Fruit is to **apple** as **vegetable** is to _____.
2. Refrigerator is to **freezer** as **stove** is to _____.
3. Hardship is to **hard** as **companionship** is to _____.
4. Food is to **people** as **fuel** is to _____.
5. Shoes is to **pair** as **eggs** is to _____.



Make Inferences

Write a spelling word to complete each sentence.

6. We sat in the first _____ of the audience.
7. Do not _____ the puppy while it is eating.
8. I just thought of a _____ to the problem.
9. Often used for wiring, _____ is an excellent conductor of heat and electricity.
10. Did I hear someone _____ my name?
11. Your smile is worth a _____ dollars.



Use Context Clues

Write the spelling words that complete the paragraph.

Every 12. should 13. that the government is composed of national, state, and local branches. All three branches 14. in the powers and duties of their elected offices. The local government of a city or town is run by the 15. The top officer of a state is the 16. At the federal level is the 17., two for each state. It is 18. for an elected official to gain experience in his or her 19. by being elected to a minor office. With a 20. to serve in a greater role, a politician may go on to higher office.

Connections to WRITING

Proofread a Speech

Proofread the speech below for ten misspelled words. Then rewrite the speech. Write the spelling words correctly and make the corrections indicated by the proofreading marks.

¶ Every citizin here will remembir this century. My missien is to have more freedom and peace in the next. There are too many concerns to mentian today, but I ^{will} be your companian as we face them. We may diffur in our methods, but we have in commen our hope for the future. elect me as your mayer, and together we can find a solutian for the problems that bothur us.

Proofreading Marks

≡	Capital Letter
/	Small Letter
^	Add
⤵	Delete
⊙	Add a Period
¶	Indent

OPINION Writing Prompt

Write a Speech

Imagine that you want to be elected president of your school's student government. Write or type a speech telling how you will make the school a better place. Use as many spelling words as you can.


- Use the writing process: prewrite, draft, revise, edit, and publish.
- Give reasons and facts to support your position and influence your audience.
- Include details and evidence to convince your audience that you are the best candidate for president.
- Use complete sentences with correct capitalization, punctuation, grammar, and spelling.
- If you typed your speech, run the spell-check function to see if you spelled the words correctly. Be careful, though. An incorrect spelling may match the spelling of another word, and the spell checker can't tell the difference.

Transfer

Think of three more words that have the final /ər/ sound. Write the words in your Spelling Journal. Circle the letters that make the /ər/ spelling pattern.

Extend & Transfer

Word Study



Pattern Power

1. _____
2. _____
3. _____
4. _____
5. _____
6. _____
7. _____

Word Study A

3. _____
3. _____
3. _____
1. _____

Word Study B

2. _____
3. _____
4. _____

Meaning Mastery

5. _____
3. _____
7. _____
3. _____
3. _____
3. _____

lighten	section	profession	onion	specimen
major	million	companion	carbon	elevator
thicken	oven	mention	diameter	cinnamon
tractor	mayor	senator	emotion	suspicion
water	dozen	mission	mirror	
governor	motor	differ	permission	
solution	remember	bother	latter	
common	citizen	copper	escalator	

Pattern Power

Use words from the spelling list above to complete the items.
 1-7. Write the words that have the /ər/ sound spelled **er**.

Word Study

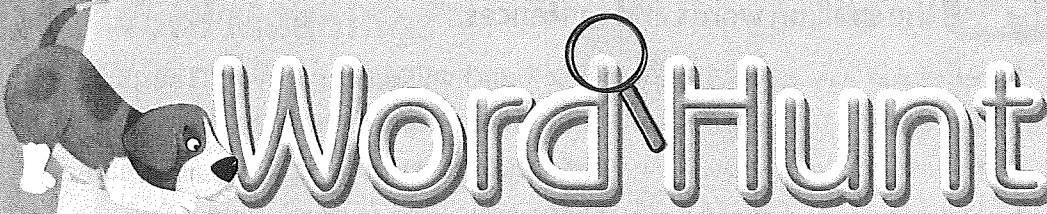
- A.** Write the spelling word for each base or root word below.
- | | |
|----------|-------------|
| 8. solve | 10. profess |
| 9. sect | 11. company |
- B.** Write the spelling word that is related to each word below.
- | | | |
|---------------|-------------|---------------|
| 12. mentioned | 13. suspect | 14. emotional |
|---------------|-------------|---------------|

Meaning Mastery

15. Write the word that names a vegetable.
16. Write the word that can mean "a task" or "a church building."
17. Write the word that means "Okay, you may do it."
18. Write the word that ends in **en** and represents 12 of something.
19. Write the word that ends in **on** and is a large number.
20. Write the word that names a spice.

Social Studies

Word Hunt



Zachary gave a speech for his social studies class. Read this speech below, and look for words with the /ən/ and /ər/ spelling patterns.

My aunt Jilly owns a bakery. It's in a shop near state offices. Every morning the aroma of cinnamon rolls drifts from the oven into the street. Then it drifts into the office where the governor is trying to work. It drifts over to the office of a senator. It drifts to the driver on the trolley bus full of tourists. Suddenly all work stops.

The governor runs down the escalator from his office and out into the street. The senator takes the express elevator from the sixteenth floor. Then she politely works her way past the mayor and other cinnamon sniffers to the bakery. The driver stops the bus's motor in front of the bakery, and everyone rushes inside.

Perhaps you think Aunt Jilly's customers should stay at their jobs instead of taking a break. Remember, small businesses have always been the heart of the United States economy. And this one brings people together. The governor and senator get to visit with several people while they wait in line. It is common for them to learn about a citizen's problems. Neighbors catch up on the latest news. Tourists get a chance to see what a friendly city we have. And Aunt Jilly makes money to hire workers and buy supplies. It's a great system.



1.

2.

3.

4.

5.

6.

7.

8.

9.

10.

WORD SORT

1-2. Write the words in which the final /ən/ sound is spelled **en**.

3-8. Write the words in which the final /ər/ sound is spelled **or**.

9-10. Write the words in which the final /ən/ sound is spelled **on**.